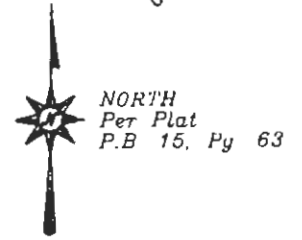


**LEGEND:**  
 IPF = Iron Pin Found  
 IPS = Iron Pin Set  
 EXP = Existing Pipe Found  
 D.B. = Deed Book  
 P.B. = Plat Book  
 T.P. = Tax Parcel  
 BH = Bore Hole  
 BRL = Building Restriction Line

COMMONWEALTH OF VIRGINIA  
 Brian H. Neal  
 License #298  
 Authorized On-Site

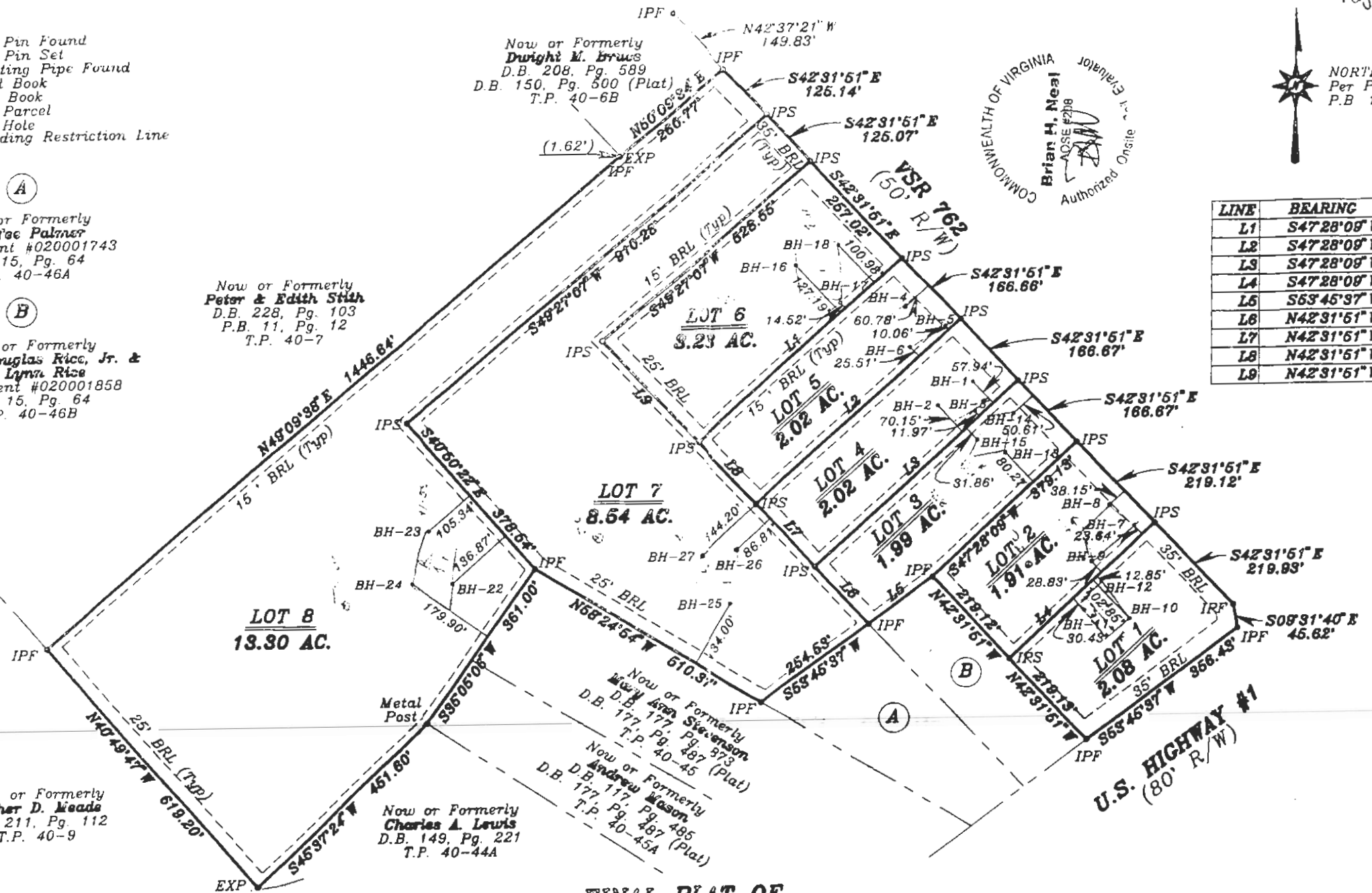


(A)  
 Now or Formerly  
**Tec Tec Palmer**  
 Instrument #020001743  
 P.B. 15, Pg. 64  
 T.P. 40-46A

(B)  
 Now or Formerly  
**William Douglas Rice, Jr. & Joy Lynn Rice**  
 Instrument #020001858  
 P.B. 15, Pg. 64  
 T.P. 40-46B

Now or Formerly  
**Peter & Edith Stih**  
 D.B. 228, Pg. 103  
 P.B. 11, Pg. 12  
 T.P. 40-7

LINE	BEARING	DISTANCE
L1	S47°28'08" W	528.23'
L2	S47°28'08" W	528.23'
L3	S47°28'08" W	528.23'
L4	S47°28'08" W	379.13'
L5	S53°45'37" W	150.00'
L6	N42°31'51" W	150.23'
L7	N42°31'51" W	166.67'
L8	N42°31'51" W	166.67'
L9	N42°31'51" W	275.31'



**FINAL PLAT OF  
 MARIAN OAKS SUBDIVISION  
 Located in THE RED OAK DISTRICT,  
 BRUNSWICK COUNTY, VIRGINIA**

SCALE: 1" = 200'  
 DATE: August 17, 2007  
 FILE: 07707-NB-BL  
 SHEET 2 of 2

**B & B Consultants, Inc.**  
 Engineers - Surveyors - Lab Analysts -  
 Plant Operators - Environmental Services  
 Charlottesville & South Hill, Virginia